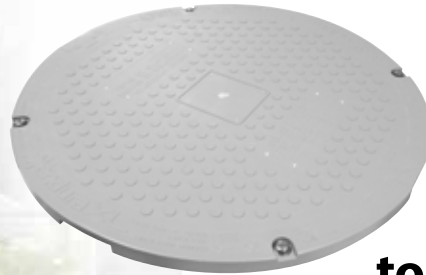


endura[®] XL Grease Interceptor



**We've got
it covered**

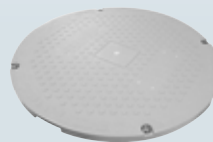
**We are pleased
to announce the
availability of Type 'M'
covers to complement the
Endura[®] XL Product Line.**

The new covers are rated for pedestrian and light traffic use and are manufactured using high grade thermoplastic for strength, durability and corrosion resistance.

The seal is recessed in the cover for security and protection. Both Endura XL 75 and XL 100 models are now available with Type 'M' covers alongside the already available Type 'S' traffic rated covers.

The Type 'M' covers are lighter than our standard Type 'S' covers, and mount flush with the surrounding frame finish and floor/grade.

The Type 'M' cover is tested and approved to CSA B481.0 with a proof load minimum of 4000lbs making it ideal for internal/external pedestrian and light traffic applications.



**The Type 'M' cover
is also available as a
replacement part**



PART NUMBER	DESCRIPTION
4075A04M	Endura XL 75GPM GI Soc w/ Type 'M' Cover
4075A04MT	Endura XL 75GPM GI FPT w/ Type 'M' Cover
40100A04M	Endura XL 100GPM GI Soc w/ Type 'M' Cover
40100A04MT	Endura XL 100GPM GI FPT w/ Type 'M' Cover

PART NUMBER	DESCRIPTION
40100ARCM	Endura XL Type 'M' Cover Replacement

www.enduragreasemanagement.com

