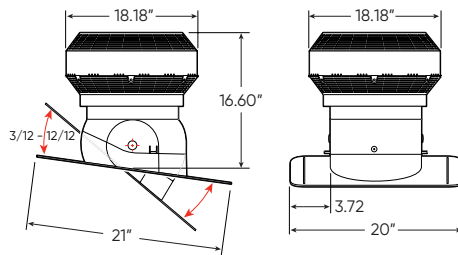


## Duraflo<sup>®</sup> PROTurbo Tall Vent

Tall vents can be installed slightly above the roof line, creating a high point to maximize the exchange of warm, moist air from the attic to the exterior of the building. In climates with high accumulations of snow, tall vents keep the exhaust above the snow, improving their operation year round. The PROTurbo combines the field tested benefits of the patented WeatherPRO<sup>®</sup> internal baffle system with multi stage, high volume, airflow for superior attic ventilation.

PROTurbo 18.18" x 20" x 16.60" (1/carton)

Color	Part Number
Black	60PRO117BL
Brown	60PRO117BR
Gray	60PRO117G
Weatherwood	60PRO117WW



Upper & Lower  
exhaust grills



Unique baffle  
system wards  
off wind driven  
snow & rain

Lower drip  
channels allow  
moisture to exit

Install then  
adjust to roof  
pitch with  
locking tabs

Centralized  
pivot point

Pitch  
adjustment stops

Easy level base

### Features & Benefits:

- Unique, patented, weather infiltration protection internal baffle system
- Large flashing allows for easy installation
- Made from durable, UV resistant polypropylene to resist denting, crushing and corrosion
- Net free venting area of 117 sq. in.
- One Turbo will ventilate 1000 sq. ft. of attic space (approx) – regardless of wind speed
- Pivoting top with locking pitch tabs accommodate 3/12 to 12/12 roof pitches
- No internal or external moving parts – requires no maintenance

### Standards:



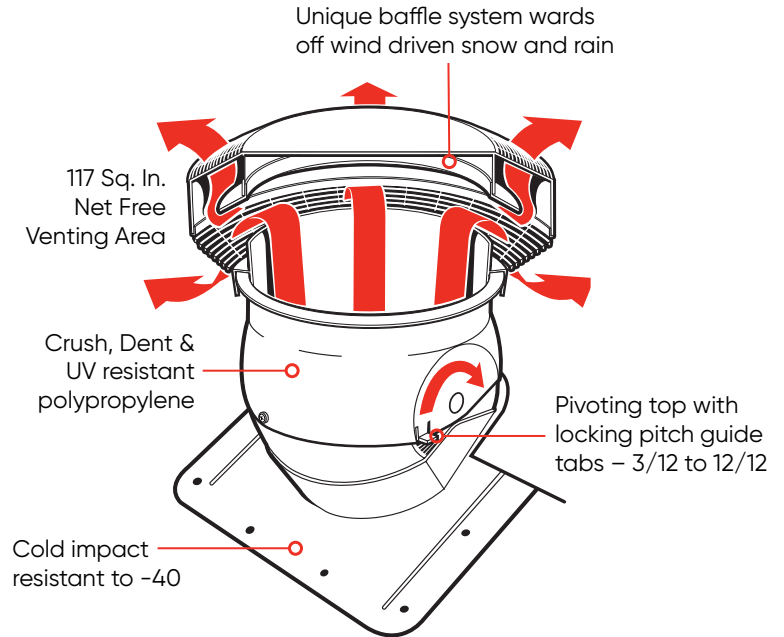
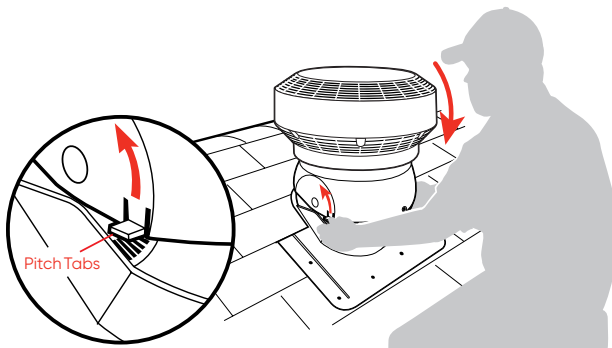
CSA Approved  
Category 2 Hurricane Rated  
Texas Department of Insurance



CDN Patents 2,536,023 & 2,803,775, U.S. Patent 7,774,023

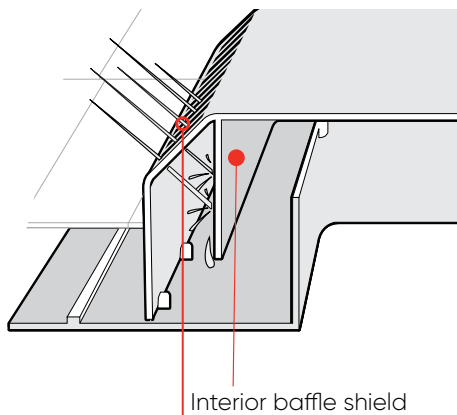
## Easy Level System

Lightweight, no-assembly design makes for easy handling. Setting the pitch is quick and simple with centralized pivot points, built-in adjustment tabs and pitch stops.



## Weather Protection

WeatherPRO's patented internal baffles deflect water and snow, allowing it to drain harmlessly out the drainage openings. Designed to allow high airflow while providing excellent defense against weather infiltration.



## Contact us

Visit our website: [ipexna.com](http://ipexna.com) /  
[sales@ipexamerica.com](mailto:sales@ipexamerica.com)

Eastern U.S. Toll free: (800) 463-9572  
Western U.S. Toll free: (888) 461-5307

Duraflo® is a registered trademark.