



Job or Customer: .....

Engineer: .....

Contractor: .....

Submitted by: ..... Date .....

Approved by: ..... Date .....

Order No: ..... Date .....

Specification: .....

**ADDITIONAL CORROSIVE  
WASTE PRODUCTS**

**ENFIELD™**  
ELECTROFUSION ACID WASTE SYSTEM

**LABLINE®**  
MECHANICAL JOINT ACID WASTE SYSTEM

**PLENUMLINE™**  
FR-PVDF MECHANICAL JOINT ACID WASTE SYSTEM

**NEUTRATANK®**  
NEUTRALIZATION TANKS

**Encase™**  
PP Double Containment System

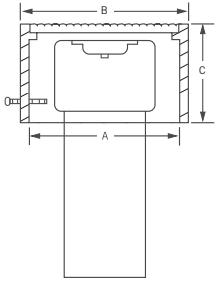
IPEX corrosive waste piping system has all the accessories necessary for a truly integrated plumbing system, including acid-resistant cleanout with nickel-bronze cover.

For efficiently managing chemical spills, our Floway™ polypropylene drain ports are specially designed to feed into IPEX acid waste systems.

**product features**

- Available in 2", 3" 4" and \*6" pipe outlet
- Load limit rated for 2400 lb
- 12" long stub of Schedule 40 FRPP pipe for simple height adjustment
- FRPP cleanout plug inside of the cover
- Nickel-bronze cover plate
- Can be used with Enfield™ or Labline™ systems
- \* 4" cleanout with 6" pipe outlet

### FLOWAY™ ADJUSTABLE ACID WASTE CLEANOUT WITH NICKEL-BRONZE COVER



Cover Plate Dimensions

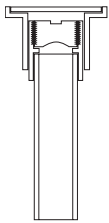
A (in)	B (in)	C (in)	D (in)
8-5/8	9-1/8	2-3/4	7-1/4

**Size (inches):**

- 2                       3  
 4                       6

**IPEX Part Number:**

\_\_\_\_\_

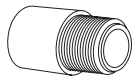


Dimension (in)	Significant Number	Product Code
2	F2COB	237173
3	F3COB	237174
4	F4COB	237175
*6	F6COB	237177

\* 4" cleanout with 6" pipe outlet

### ACCESSORIES

Male Iron Pipe Threaded Outlet



3	-	257091
4	-	257092

FPT Tap for Priming Drain Assembly

3/8	-	237430
1/2	-	237429

### About the IPEX Group of Companies

As leading suppliers of thermoplastic piping systems, the IPEX Group of Companies provides our customers with some of the world's largest and most comprehensive product lines. All IPEX products are backed by more than 50 years of experience. With state-of-the-art manufacturing facilities and distribution centers across North America, we have established a reputation for product innovation, quality, end-user focus and performance.

Markets served by IPEX group products are:

- Electrical
- Telecommunications and utility
- Industrial process piping
- Municipal pressure and gravity flow
- Plumbing and DWV and water supply
- Irrigation
- Electrofusion PE for gas and water
- Industrial, plumbing and electrical cements
- PVC, CPVC, PVCO, ABS, PE, PEX, PP and PVDF pipe and fittings

Products are supplied and distributed in the United States by IPEX USA LLC.

Flowway<sup>™</sup>, Enfield<sup>™</sup>, Labline<sup>®</sup>, Plenumline<sup>™</sup>, Neutratan<sup>®</sup> and Encase<sup>™</sup> are trademarks of IPEX Branding Inc.

---

This literature is published in good faith and is believed to be reliable. However, it does not represent and/or warrant in any manner the information and suggestions contained in this brochure. Data presented is the result of laboratory tests and field experience.

A policy of ongoing product improvement is maintained. This may result in modifications of features and/or specifications without notice.