

## Endura<sup>®</sup> XL Type 'M' Covers

Type 'M' covers are rated for pedestrian and light traffic use and are manufactured using high grade thermoplastic for strength, durability and corrosion resistance.

Both Endura XL 75 and XL 100 models are now available with Type 'M' covers alongside the already available Type 'S' traffic rated covers. The Type 'M' covers are lighter than our standard Type 'S' covers, and mount flush with the surrounding frame finish and floor/grade.

The Type 'M' cover is tested and approved to CSA B481.0 with a proof load minimum of 4000lbs making it ideal for internal/external pedestrian and light traffic applications.

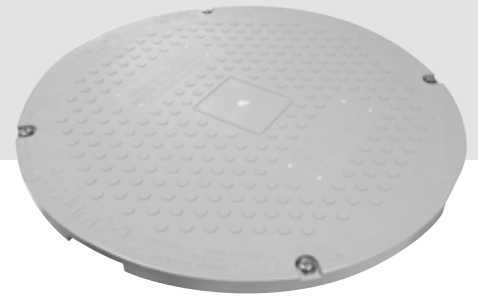
### Benefits:

- Recessed seal for security and protection
- Lighter than standard 'S' covers
- Flush mount
- Available as a replacement part

### Standards:



Tested and approved to  
CSA B481.0



### Endura XL Units with Type 'M' Cover

Endura XL	Part Number	Product Code
Endura XL 75 GPM GI (Soc)	4075A04M	766080
Endura XL 75 GPM GI (FPT)	4075A04MT	766081
Endura XL 100 GPM GI (Soc)	40100A04M	766078
Endura XL 100 GPM GI (FPT)	40100A04MT	766079
Endura XL Type 'M' Cover Replacement	40100ARCM	766075



XL 75

XL 100



### Contact us

Visit our website: [ipexna.com/](http://ipexna.com/)  
[enduragreasemanagement.com](http://enduragreasemanagement.com)

Eastern U.S. Toll free: (800) 463-9572  
Western U.S. Toll free: (888) 461-5307

Endura<sup>®</sup> is a registered trademark.