

6" Cobra Pipe Clip for IPEX Industrial Thermoplastic Piping Systems

IPEX offers a 6" Cobra Pipe Clip – complementing our line of 3/8" – 4" Cobra Pipe Clips – suitable for use with IPEX Industrial Thermoplastic Piping Systems. IPEX Cobra Pipe Clips provide installation flexibility, strength and lasting reliability.

IPEX Cobra Pipe Clips can be used with:

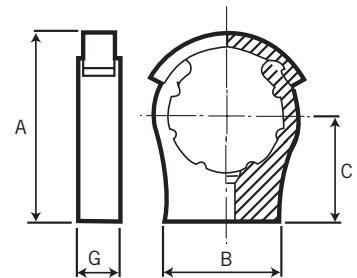
- Xirtec® PVC & Xirtec® CPVC
- Duraplus™ ABS Industrial
- Enpure™ PP
- Labline® & Enfield™ PP
- Plenumline™ PVDF



Product Selection Chart

Nom. Pipe Size Inches	Significant Number	Product Code	Critical Dimensions (inches)					Screw/Bolt Size	Wt. (oz)
			A	B	C	G			
* 3/8	434305	437340	-	1.38	0.98	0.63	#8-5/32"	0.25	
* 1/2	434306	437341	-	1.38	1.18	0.63	#10-1/4"	0.29	
* 3/4	434307	437342	-	1.38	1.38	0.67	#10-1/4"	0.39	
* 1	434308	437343	-	1.57	1.57	0.67	#10-1/4"	0.49	
1-1/4	434309	437344	2.95	1.77	1.77	0.79	#10-1/4"	0.74	
1-1/2	434310	437345	3.35	1.97	1.97	0.83	#10-1/4"	1.05	
2	434311	437346	4.02	2.36	2.36	0.83	#10-1/4"	1.47	
2-1/2	434312	437347	4.80	2.76	2.76	1.22	5/16"	3.32	
3	434313	437348	5.83	3.15	3.54	1.22	5/16"	4.26	
4	434314	437349	6.73	3.54	3.78	1.38	5/16"	6.53	
6	434317	437432	9.57	6.69	5.91	1.57	5/16"	11.64	

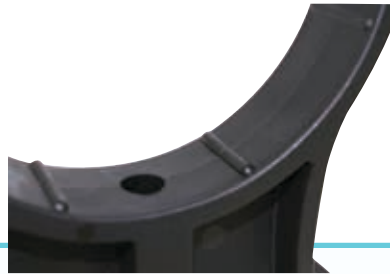
* 3/8", 1/2", 3/4" and 1" pipe clips are supplied without retaining bands. Bolts/screws not supplied.



Features & Benefits



Heavy duty design with a wide pipe contact surface area



Friction reducing ribs to permit pipe expansion/contraction



Retaining band prevents unwanted opening of pipe clip



No reliability issues when used in corrosive environments



Provides lateral pipe support

For recommended maximum support spacing of IPEX piping systems, please consult our online technical manuals.

Contact us

Visit our website: ipexna.com

Toll Free: (866) 473-9462

Duraplus™ ABS, Enpure™ PP, Labline®, Enfield™ PP, Plenumline™ PVDF, and Xirtec® are trademarks used under license. Xirtec® CPVC piping systems are made with Corzan® CPVC compounds. Corzan® is a registered trademark of the Lubrizol Corporation.