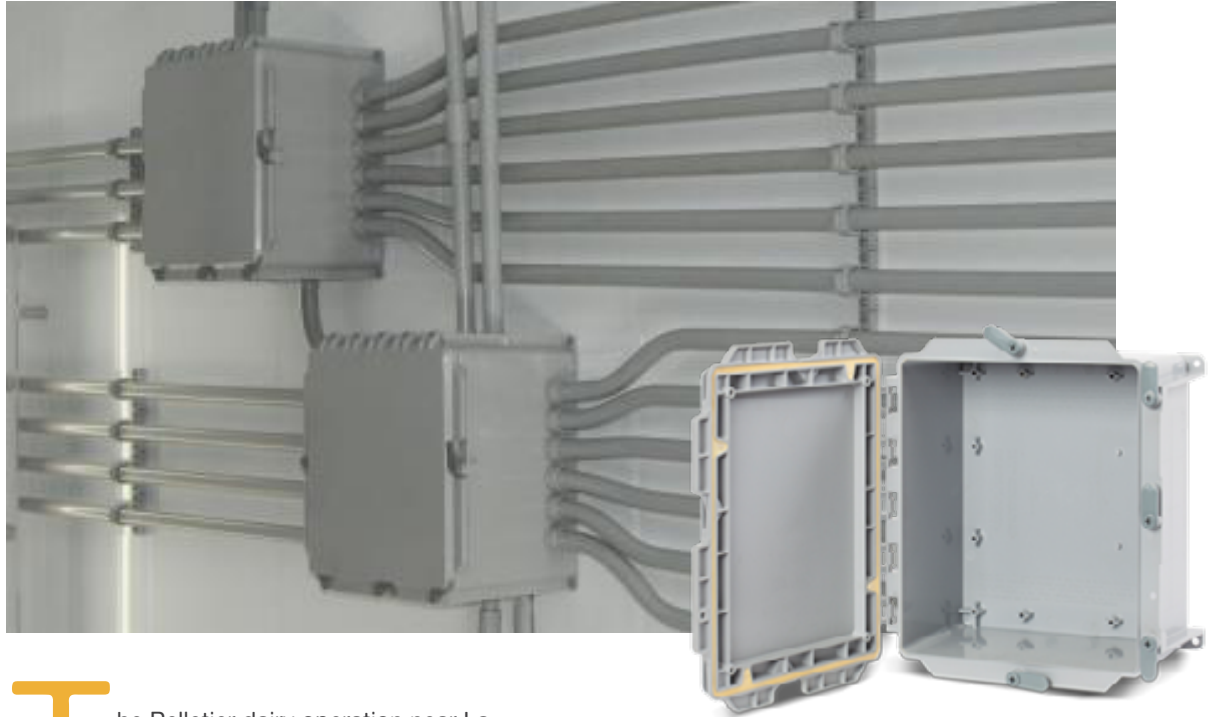


Dairy Farms need IPEX, too



The Pelletier dairy operation near La Pocatière, Québec needed a wiring and panel upgrade that would be sturdy enough to manage the demands of an 80-cow dairy herd and the insurance inspectors. Dairy barns are unique environments, aside from the cows, the barns need secure wiring for the milking stations and lighting, and that wiring needs protection from regular exposure to moisture when the barns are cleaned.

The Scepter Junction Box Solution

This is where the IPEX Scepter® JBox™ and new Hinged Cover Scepter® JBox™ junction boxes came in. The Scepter® JBox™ was exactly what the contractor was looking for — a nonmetallic and moisture free junction box for an installation impervious to water and corrosion. The new hinged cover junction box opens more than 180° for trouble-free access to control devices and instruments and is designed to work with existing PVC conduit runs. The Scepter Hinged Cover

“My job was easy with IPEX PVC. I didn’t need to fight to install the fittings.”

Sebastien Roy,
Electrical Contractor, Groupe Caillouette et Associe

JBox™ NEMA 3R and 4X and the Scepter® JBox™ NEMA 3R, 4X and 6P are NEMA 3R and 4X rated, perfectly suited for indoor and outdoor use and in wash-down environments such as the Pelletier barn. The junction boxes are 100% non-metallic, so there are no components susceptible to corrosion, and their injection molded gaskets are permanently fixed to the cover.





AN INDUSTRY FIRST!

The **NEW Scepter® JBox®** is the first junction box to feature a fully integrated molded gasket.

Sebastien Roy, electrical contractor from Groupe Caillouette et Associe, adds, “The junction boxes are strong with incomparable quality and the incorporated gasket on the cover is a very good advantage. With the Scepter Hinged Cover JBox™, you never ‘lose’ the cover — a very useful feature.”

Conduits to Fit the Job

In addition, the Scepter® JBox™ PVC Rigid pipe and fittings provided waterproof and long-lasting conduit protection for the wiring. Connecting the pipe and solvent sealing was a breeze due to the consistency in the construction of the pipe. The contractor stated, “My job was easy with IPEX PVC. I didn’t need to fight to install the fittings. An IPEX elbow is 90°, not 85°! The PVC couplings are round, not oval like some other brands.”

With its new wiring and protective conduits and junction boxes, the Pelletier barn now has a robust and secure system that will last long into the future.

